



WJ ENGLAND  
& SON LIMITED

PORTFOLIO  
OF PRODUCTS  
& SERVICES

# UNIFIED COMMUNICATIONS WITH A SOFTWARE IP PBX



3CX is a software-based, open standard, IP PBX that offers complete Unified Communications features, out of the box. As an affordable software-based solution 3CX makes installation, management and maintenance ever so easy while at the same time offering your business a number of benefits:

- Slash of telco bills by using SIP trunks / VoIP providers
- Inexpensive to purchase and scalable for future growth
- Boost Productivity with unified communications: Presence, Chat
- Virtualizable, Cloud Ready or Appliance Friendly
- Mobility: Work from anywhere with the Android and iOS clients
- Integrated Video Conferencing using WebRTC
- Improve Customer Service: Click2Call & CRM integration



# IP PHONES & VIDEO CONFERENCING



If you have a high-speed internet connection and have taken the leap to go for VoIP, we will also provide you with a vast range of superb HD quality IP Phones and Video Conferencing devices which offer endless possibilities. Apart from great financial savings the latest technology brings along Portability, Flexibility, omission of extra power cables and unimaginable features that simplify your needs.

- VOIP Phones
- Wireless IP Phones
- VOIP headsets
- VOIP Conference phones
- Video Phones
- IP Video Conferencing
- Extension modules
- 3CX VOIP Phone for Android, IOS and Windows





# DOOR PHONES AND RF ACCESS CONTROL SYSTEMS



One cannot deny that having the right access control systems in place is key !

The range of devices we can provide you with ensure that access is only granted to authorized individuals. Devices range from electronic keypads that secure a single door to large networked systems for multiple buildings. Access Systems also greatly simplify management of your facility without the need to replace lost keys, hunt down old keys from terminated employees, or wonder who has access to which areas !

- SIP door entry systems
- VOIP paging intercoms
- VOIP Video/Audio intercoms
- RF readers
- Backlight
- Tamperproof/Anti vandal
- Night vision intercom HD cameras
- IP54/ IP56/IP69K certifications on various models



## APPLICATION SCENARIOS



Sports & Leisure



Building



Government



Retail



Critical Infrastructure



Banking & Finance



Transportation

# IP VIDEO SURVEILLANCE CCTV



Once upon a time, the grainy surveillance systems that operated on analog technology represented a breakthrough in security and monitoring for businesses everywhere. But times have changed and digital video surveillance is making analog technology obsolete.

The new digital IP surveillance systems will provide you with security and enhanced productivity by reducing losses, theft and vandalism; easier, more effective installations leveraging your current network infrastructure and investment which are cost effective and scalable; enabling you to check in on your office colleagues, family and pets while you're away, at any time from anywhere; producing the invaluable evidence for court cases; holds your staff accountable for their actions; prevention of theft and illegal activities;....the possibilities are endless!

- Indoor. Outdoor IP HD cameras
- Infra red cameras
- Dome /Bullet cameras
- IP Network Video Recorders and storage solutions
- Video management software



720p  
HD

SIP



POE



# WATCHGUARD FIREWALLS

For over 20 years, WatchGuard has pioneered cutting-edge cyber security technology and delivered it as easy-to-deploy and easy-to-manage solutions.

## ONE PLATFORM, TOTAL SECURITY

All of WatchGuard's security services are delivered as an integrated solution within an easy-to-manage and cost-effective Firebox® appliance that is available as both physical and virtual instances. Each Firebox appliance is ready to deliver the full portfolio of security service, along with a suite of management and visibility tools to keep you ahead of the rapidly evolving the landscape.

## EASIER TO PURCHASE

One Platform, one package, total security. Our platform delivers a suite of powerful network and endpoint security services along with the intelligence of correlation and Industry-leading performance.

## EASIER TO DEPLOY

Remotely deploy and configure multiple Firebox appliances across a distributed enterprise with a minimal on-site assistance using a Cloud-based deployment and configuration tool.

## EASIER TO MANAGE

Manage one Firebox appliance or hundreds from a single, easy-to-use console, maximizing efficiency and streamlining network administration, while applying configuration changes in real time.



**Intelligent  
Protection**



**Simplified  
Management**



**Actionable  
Visibility**



# ACTIVE NETWORK COMPONENTS



Whether it be home, SOHO, SMB or Enterprise, we will provide you with the right combination of networking equipment that will perform to the highest standards beyond your expectations. The daily ever growing needs in the ICT world have become endless and thus intelligence, functionality and scalability are key factors which one needs to attend to daily, whether it be in the health, entertainment, hospitality sectors...you name it! Today, active network components are the basis of an efficient infrastructure which provide the seamless daily operations and routines.



Let us help you with the solutions.

- Managed & Unmanaged Gigabit switches with POE
- Wifi Routers
- VOIP gateways and routers
- PSTN/4G Gateways
- Analogue ATA Telephone Adapters
- Wifi Access Points
- POE adpaters 24V/48V



# CAMBIUM NETWORKS



THE ACCESS NETWORK SOLUTION YOU'VE ALWAYS WANTED.  
FLEXIBLE. AVAILABLE. SCALABLE.

## FLEXIBLE

Rapidly create custom connectivity with the best enterprise wireless solutions that adapt with your evolving needs.

## AVAILABLE

Cambium Networks access network solutions are proven rigorous and reliable over long term, reducing maintenance costs and delivering low total cost of ownership.

## SCALABLE

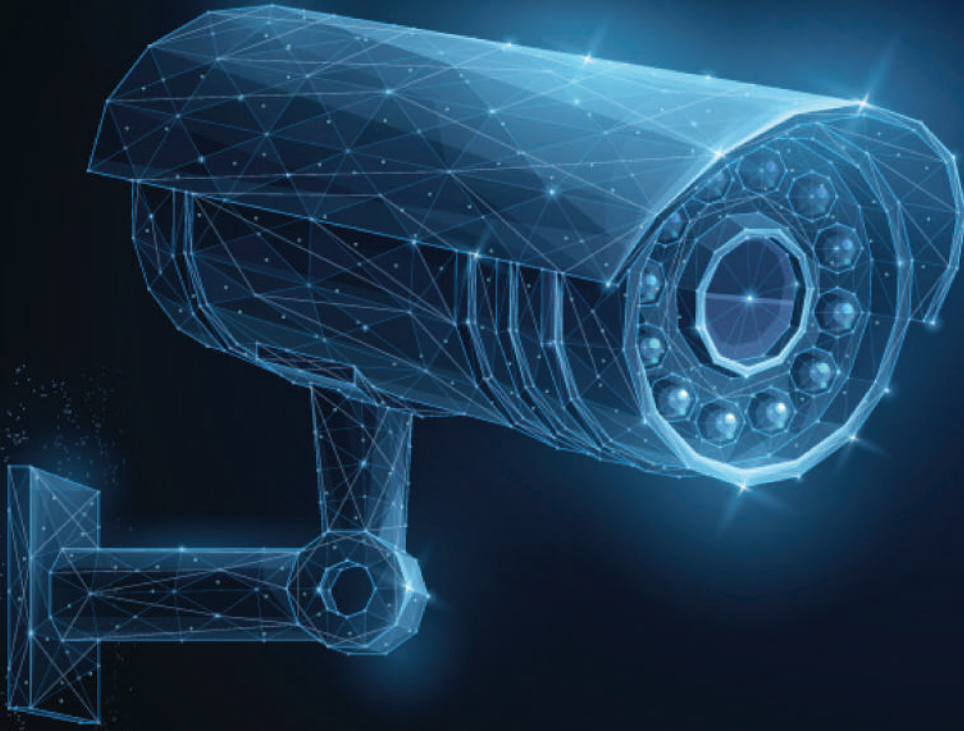
Networks can grow gracefully from a handful of subscribers to thousands of connected business, residences and field equipment.

## MANAGEABLE

Monitor network performance in real time, and manage software and hardware with a bird's-eye view of the end-to-end network.



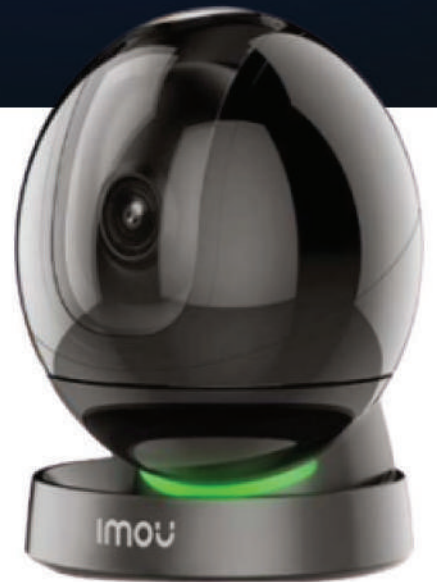




Imou is the brand new video surveillance brand launched by Dahua Technology, directly addressed to end users. Imou uses all the technology of Dahua Technology, offering very high quality WIFI products, very simple to configure and use.

The Imou system is easy to set up and connect with SmartHome compatibility. Providing round the clock safety, the Imou system offers professional level reliability and features.

Imou gives you the peace of mind you're looking for.



# BATTERY-POWERED SENSORS

Monnit offers a wide range of battery-powered Sensors, with or without external probe and of variable length. They can be used to monitor different parameters in relation to the area of application and they are able to refer these information to the central gateway.

Monnit's strong point consists in the various types of sensors provided and in the various versions each sensor is presented.



## WIRELESS SENSOR TYPES

Temperature	Humidity	CO2	Water Detect	Water Rope
Open / Closed	Motion Detection	Carbon Monoxide	Dry Contact	Accelerometer
AC Current Meter	Voltage Detect	Resistance	Ma Current Meter	Pulse Counter
Pressure Meter	Activity	Button	Air Quality	Air Velocity
Hydrogen Sulphide	Differential Air Pressure	Light Meter	Voltage Meter	Ultrasonic

## Monitor Data in the Cloud With Wireless Sensors

Temperature  
above 5°C

Alerts Via

E-mails SMS



12+ years  
battery life



360m  
range



Connect via 3g,  
ethernet or wifi



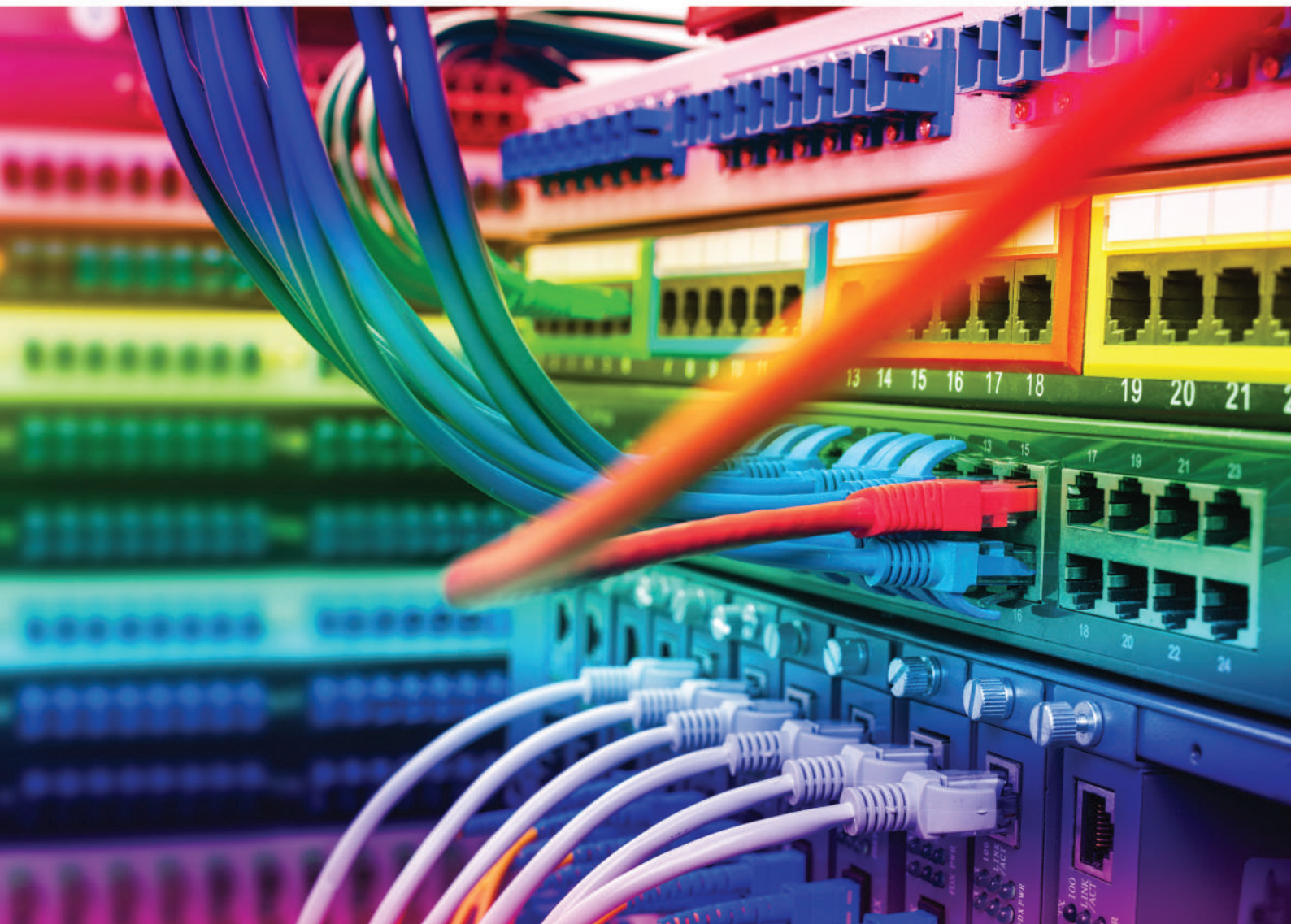
# PASSIVE NETWORK COMPONENTS

---

Network infrastructure failures? Can't seem to trace the network points and cables? Spend endless time diagnosing on substandard network installations? How many times have you faced such situations?

Meticulously analysing your network requirements is an essential part in planning, however implementing network installations with literal patch work is the point of failure. Ensure that you have robust and reliable components which you are able to passively think about again!

- Floor standing and wall mounted cabinets
- Patch panels
- Cable managers
- Patch leads
- Structured cabling
- Ethernet, Fibre cables and Patch leads
- Face plates and trunking



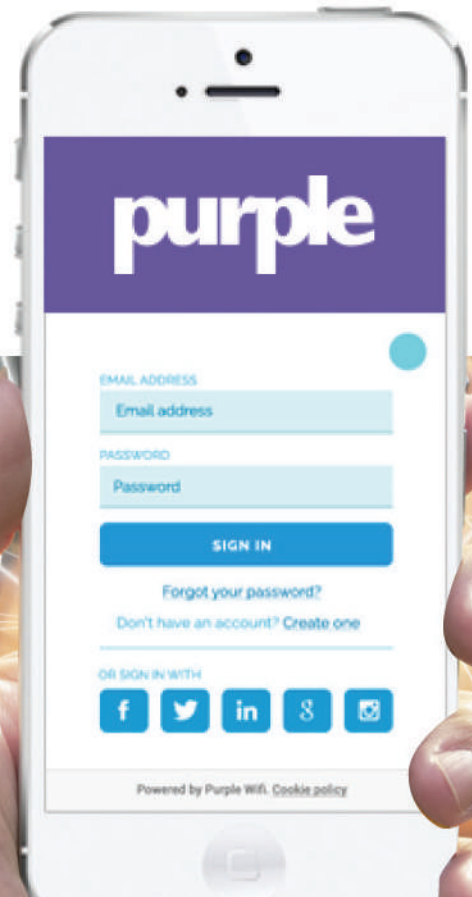
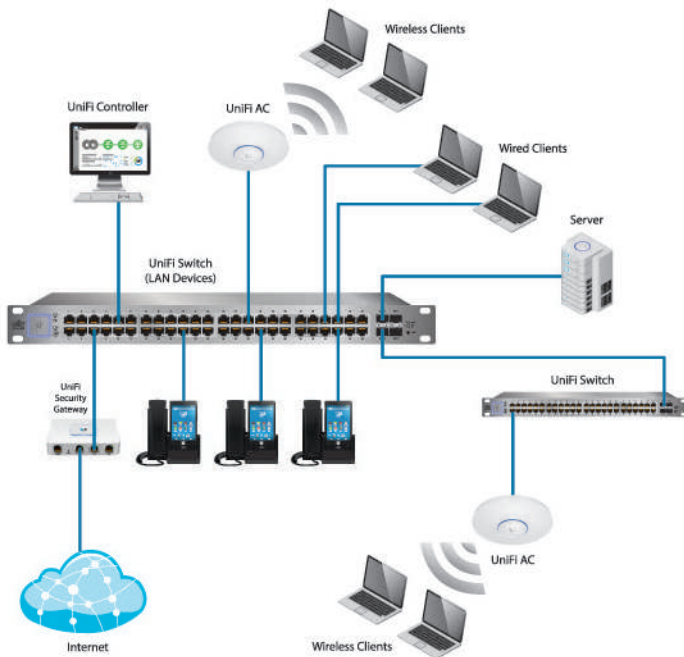
# WIFI ACCESS POINTS & ACCESSORIES



Little do people take note that it is the underlying complexity of Micro waves, Radio waves and Satellite communication that all bring the consumption of information to our PC's, tablets, mobile phones and TV's through our commonly known **Wi-Fi** ...the technology that has brought communication to be accessed from practically any home, school campus, hospital, public place .... anywhere you could think of.

However, we did take note of these technologies and have a passion to bring it as close to you as possible!

- Wifi Routers
- Wifi Access Points
- Wifi network bridges
- Wireless adapters
- Point to Point Gigabit radio
- Wifi Antennas, multiplexers and dish reflectors
- Wifi network monitoring Software
- Wifi Access Control and marketing solution



# WIFI SOLUTION

The logo for Purple, featuring the word "purple" in a white, lowercase, sans-serif font inside a dark purple rectangular box.

## “WHAT IS THE WIFI PASSWORD PLEASE?”

How many times have you heard this request? Wouldn't it be more convenient if your customers could access guest WiFi without having to liaise with staff to obtain a password?

Well, with Purple's WiFi and analytics solution, your customers can login to free WiFi using social media authentication via Facebook, Twitter, LinkedIn, Instagram, Weibo and VK or by completing a short form.

No more passwords.

Purple also enables restaurant, bars and hotels to find out who their clients are, what they want and how they interact with your brand.

Using personalised landing pages, e-shots and SMS, you can manage every step of your customer's journey, from the first time they login, to their most recent visit, based on their demographic profile, venue, celebration or location.

### Wifi Solutions

- Social WiFi
- Logic flow
- SMS & Email
- Micro surveys
- Reviews
- Content filtering
- Bandwidth & payments
- Multilingual
- WiFi analytics
- API access

### Location services

- Wibeacons
- Proximity marketing
- Heat mapping
- Moving Venues



### ACCESS

Ensuring our WiFi is easy to access is at the heart of everything we do. Users login seamlessly through social media for fast, effortless access.



### ANALYZE

Our portal pulls together multiple data sources allowing you to analyze foot traffic, dwell times and bounce rates of your physical space.



### ACTION

Take action when people are in your venue using our marketing tools to target users through email, SMS and customisable splash pages.

STADIUMS  
HEALTHCARE

SMART CITIES  
RETAIL

HOSPITALITY  
SHOPPING MALLS

# MANAGED SERVICES



Technology is ever changing. There are times where you may want to adopt new services but don't know exactly where to start from. Let our managed IT services guide you through every step of the way. We will manage on site or via hosted/cloud, while you do what you do best!

By taking advantage of our technical know-how, you will save on software, hardware and resource costs. You can fully enjoy our expertise, while transferring some of your capital expenditure to operational expenditure. As the focus of this service is technology it is still imperative for us to understand your business objectives and needs. We then leverage our experience and product base in order to maximise your spending power.

## Remote Management solutions for Managed Service Providers and End users

- Active Discovery
- SNMP Monitoring
- Roles & Permissions
- Custom Scripting
- Patch Management
- Reporting
- Client Groups
- Asset & Inventory Tracking
- Real-Time Checks
- Task Automation
- Remote Background Management
- Monitoring Templates
- Automated Monitoring
- Maintenance Windows
- Alerting & Viewing
- Site Concentrator
- Remote Access
- Anti-virus
- Web filtering



Remote Access



Remote Monitoring



Ticketing

## Backup and Recovery solutions

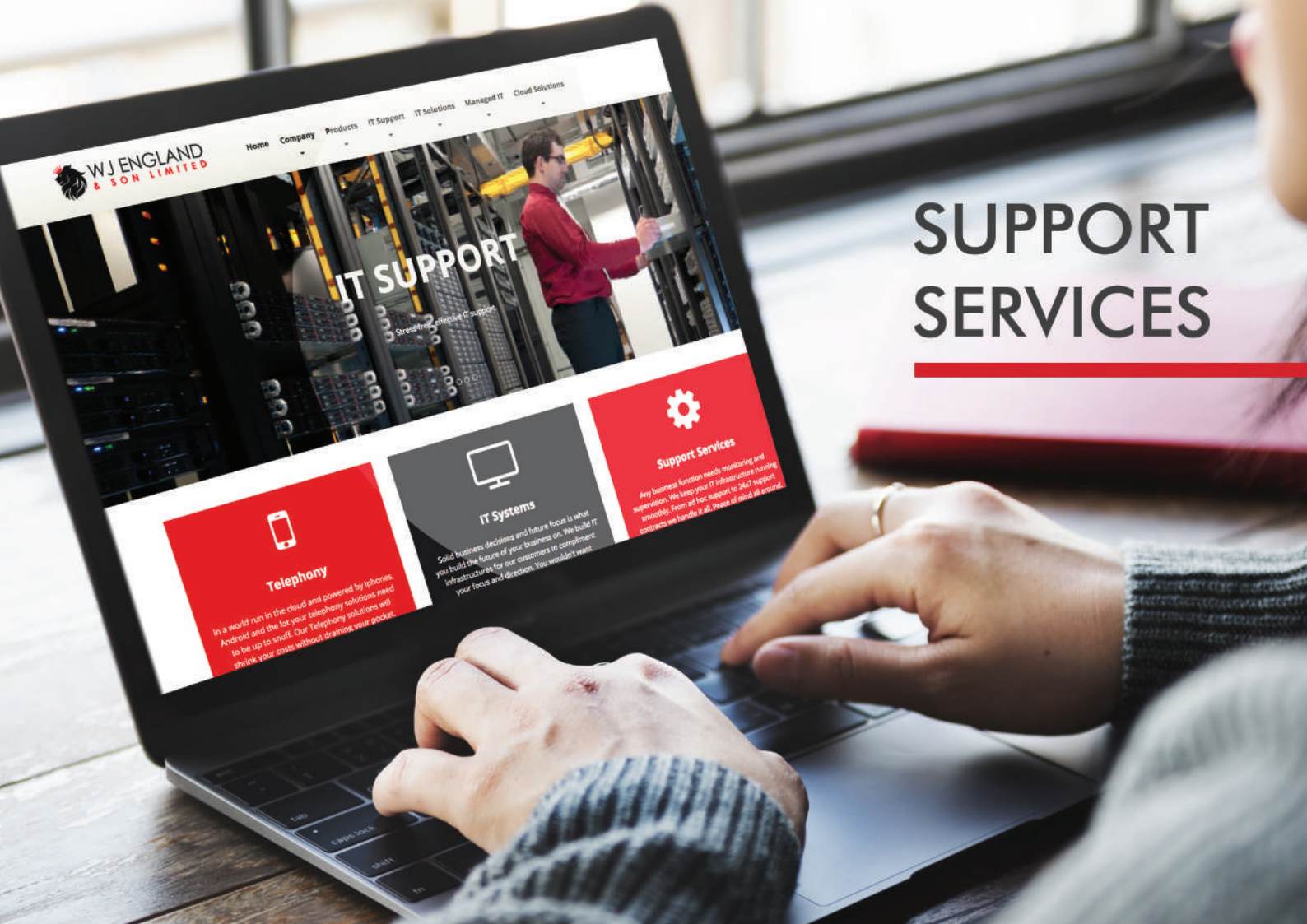
- Offsite & Onsite Recovery
- Bare Metal Recovery (BMR)
- Standby Image
- Cloud Recovery
- Targets
- Delta Recovery
- Private Key
- Encryption
- Virtual Disaster Recovery (VDR)
- Archiving
- Continuous Restore
- Long Term Data Retention

## Email solutions

- Zero Hour Virus Detection
- Spam Detection
- Built-in Email Continuity
- Geographically Distributed Archiving
- Directory Support
- Full integration with Remote Management solution

## Service Desk ticketing solution

- Field Site Visits
- Ticketing
- Task Management
- Time Tracking
- QuickBooks Integration
- Full Integration with Remote Management solution



# SUPPORT SERVICES

A vast array of managed IT support packages as well as ad-hoc services for businesses of all kinds are offered. Whether you've got a technically adept IT department or you prefer to completely outsource, we definitely have a solution to suit your needs.

Companies of all sizes already benefit from our services, whether Partner, Resellers, startups or fully fledged enterprises, our ICT support and training services ensure that the IT professional is equipped with all the required knowledge and support, undoubtably deserved.

- Ad hoc support Services
- Prepaid support Services
- Retainer Support Services
- On-site and Off-site support Services
- Remote support Services



1906  
Established

William J England & Son Ltd (typically referred to as WJ England) was established in 1906 by the late William John England. The company had three main areas of operation. The product oriented line of business was the importation of core food supplies like flour and sugar, which were distributed across the Maltese islands through wholesalers, while Shipping and Insurance were the service oriented branch of the company. While our heritage did not originate in IT, we are extremely proud that we have been able to adapt.

1940's  
to 1970's

As growth continued, Henry P England was the lead person for the shipping and insurance operations while his brother Paul W England pushed ahead with the tiling and soft furnishings side.

1980's

In the early 1980s the company realised that technology was going to bring on major changes in business operations and therefore invested in IT to improve internal working methods.

In 1981, the coming into force of the Insurance Business Act required insurance operations to be managed in a highly regulated environment and separately from other corporate structures. To handle this requirement, the insurance operations were migrated to a sister company, England Insurance Agency Limited. Paul W England took over the chair as Henry P England chaired the newly formed company.

1990's

In the early 1990s, at the advent of cellular technology, the company was appointed as the local distributor for Fonerange, Elite Mobile and European Telecom among others, becoming a lead importer, distributor and retailer of cellular goods and accessories.

2000  
onwards

The year 2000 saw many changes within the group with Henry and Paul England retiring from daily duties within the company, retaining the role of consultants to the Group. They were, in turn, succeeded by William J England and Peter E England.

Today

Today, Peter England handles the insurance operations within the company and its sister company England Insurance Agency Ltd, while William J England focuses on growing the core IT business for the company.

A hundred years in the making, William J England & Son Ltd is a leading IT solutions company, offering products and services to fit the needs of small to medium enterprises (SMEs). William J England & Son Ltd remains firmly committed to offering affordable quality products and reliable support to its growing customer base on a round the clock basis via a dedicated team of products and professionals.



**WJ ENGLAND**  
**& SON LIMITED**

**Tel:** +356 21248205

**Address:** 190/1, Marina Street, Pieta, PTA9041, Malta.

**Website:** [www.wjengland.com](http://www.wjengland.com)